

# Eye injuries are preventable.

Remember the 3 Ss



1.

Store the sketchy stuff



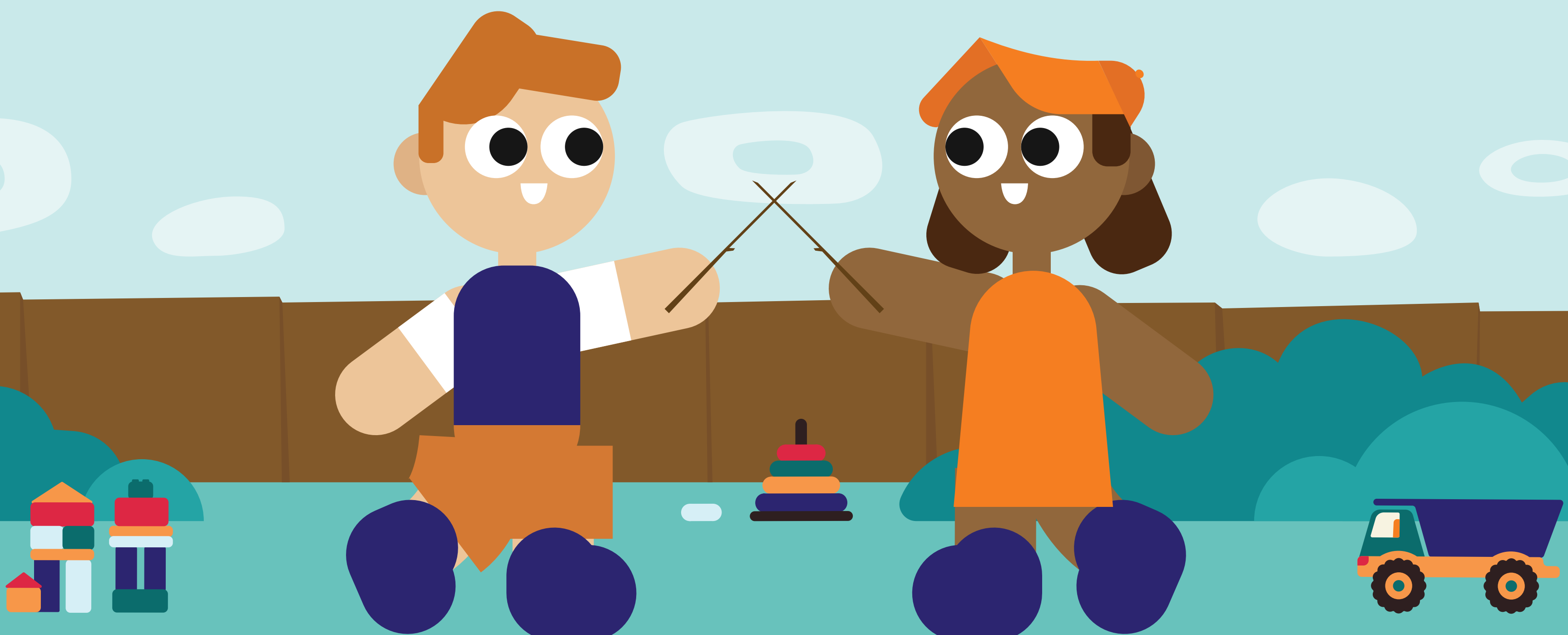
2.

Supervise the sillies



3.

Slide on the safety specs



TAKE THE SURVEY TO  
**WIN** SAFETY  
SPECS



# Most eye injuries happen at home during play.

9 out of 10 eye injuries don't need to happen.



Protect their future.



LEARN MORE AND  
**WIN** SAFETY  
SPECS

